



604E 83790

Setup Guide 安裝說明書 설치 설명서 คู่มือการติดตั้ง Hướng dẫn thiết lập Panduan Pengaturan

- Before installation, read the Safety Guide.
- 安裝前，請先閱讀安全說明書。
- 설치 전 안전 설명서를 숙지하십시오.
- ก่อนทำการติดตั้ง โปรดอ่านคู่มือความปลอดภัย
- Trước khi cài đặt, hãy đọc Safety Guide.
- Sebelum pemasangan, baca Panduan Keselamatan.

1 Check the contents
檢查包裝內容
내용물을 확인합니다
ตรวจสอบอุปกรณ์ต่างๆ
Kiểm tra các thứ bên trong bao bì
Periksa isinya

- This Guide
本說明書
본 설명서
คู่มือเล่มนี้
Hướng dẫn này
Panduan ini
- Safety Guide
安全說明書
안전 설명서
คู่มือความปลอดภัย
Safety Guide
Panduan
Keselamatan
- "Software/Product Manual" disc
"軟體/產品說明書"
光碟
"소프트웨어/제품 설명서"
디스크
ดิสก์"ซอฟต์แวร์/
คู่มือผลิตภัณฑ์"
 đĩa "Hướng dẫn sử dụng
sản phẩm/phần mềm"
Disk "Software/Product
Manual"
- Power Cord
電源線
전원 코드
สายไฟ
Dây nguồn
Kabel daya
- Telephone Cable
電話線
전화선
สายโทรศัพท์
Cáp điện thoại
Kabel telepon
- Wireless LAN Adapter
無線區域網路介面卡
무선 LAN 어댑터
อะแดปเตอร์ LAN ไร้สาย
Bộ điều hợp LAN không dây
Adaptor LAN Nirkabel
- Operator Panel Label*
操作面板標籤*
조작부 라벨*
สติ๊กเกอร์สำหรับแผงควบคุม*
Nhãn trên bảng vận hành*
Label Panel Operator*

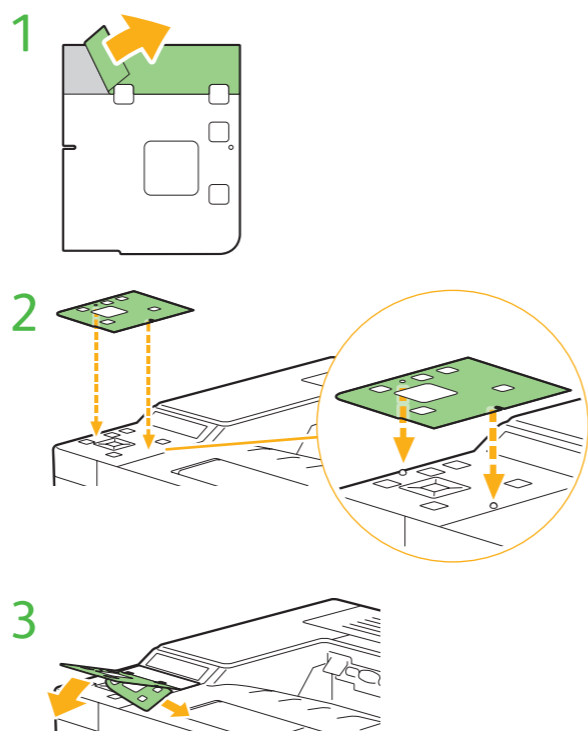
* This item may not be included depending on country or region.
 * 視國家或地區而定，可能不包含此物品。
 * 이 품목은 국가 또는 지역에 따라 제공되지 않을 수 있습니다.
 * รายการนี้อาจไม่มีมาให้ ขึ้นอยู่กับประเทศหรือภูมิภาค
 * Mục này có thể không được bao gồm tùy thuộc vào quốc gia hoặc khu vực.
 * Item ini mungkin tidak disertakan tergantung pada negara atau kawasan.

- Prepare a USB cable or an Ethernet cable.
- 準備USB纜線或Ethernet纜線。
- USB 케이블 또는 이더넷 케이블을 준비합니다.
- เตรียมสาย USB หรือสายอีเทอร์เน็ต
- Chuẩn bị cáp USB hoặc cáp Ethernet.
- Siapkan kabel USB atau kabel Ethernet.

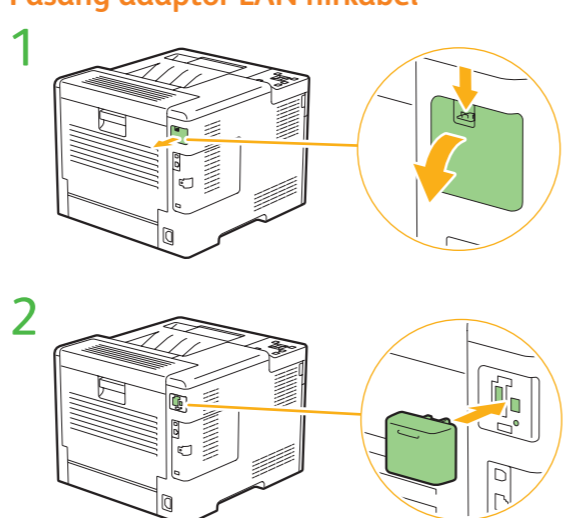
2 Remove the packing material
拆除包裝材料
포장재를 꺼냅니다
นำบรรจุภัณฑ์ออก
Tháo vật liệu đóng gói
Lepaskan bahan kemasan

3 Attach the operator panel label
黏貼操作面板標籤
조작부 라벨을 붙입니다
ติดสติ๊กเกอร์สำหรับแผงควบคุม
Đính kèm nhãn trên bảng vận hành
Pasangkan label panel operator

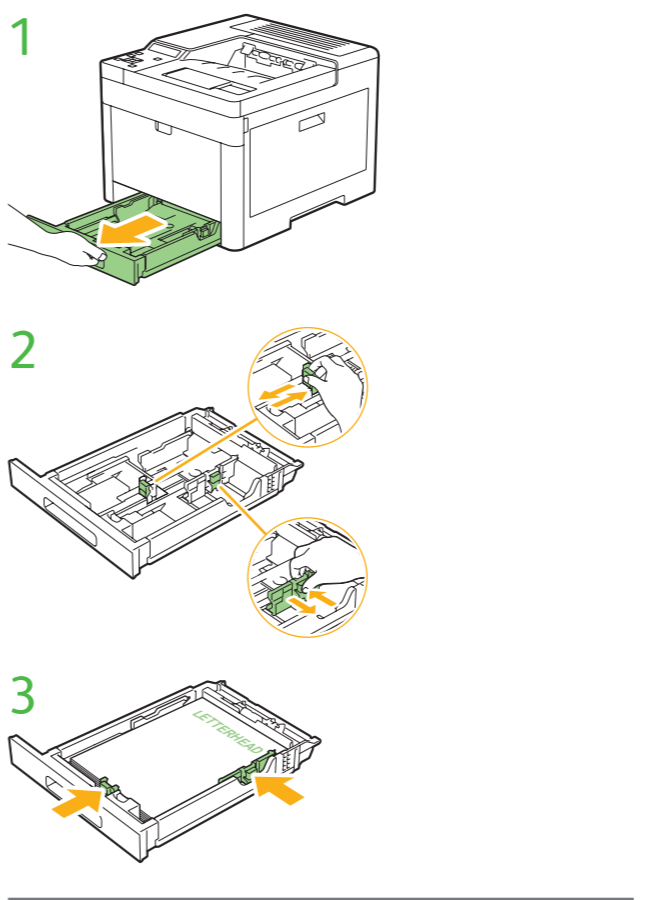
Attach the operator panel label as necessary.
 必要時黏貼操作面板標籤。
 필요한 경우 조작부 라벨을 붙이십시오.
 ติดสติ๊กเกอร์สำหรับแผงควบคุมตามความจำเป็น
 Đính kèm nhãn trên bảng vận hành khi cần thiết.
 Pasangkan label panel operator seperlunya.



4 Install the wireless LAN adapter
安裝無線區域網路介面卡
무선 LAN 어댑터를 설치합니다
ติดตั้งอะแดปเตอร์ LAN ไร้สาย
Cài đặt bộ điều hợp LAN không dây
Pasang adaptor LAN nirkabel

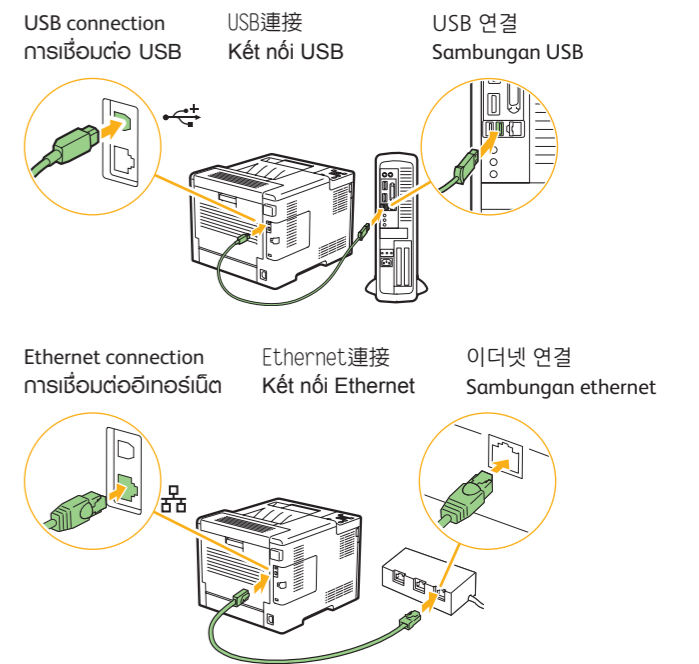


5 Load paper in the tray
在紙盤中放入紙張
트레이에 용지를 넣습니다
บรรจุกระดาษลงในถาด
 nạp giấy vào khay
Masukkan kertas ke dalam baki



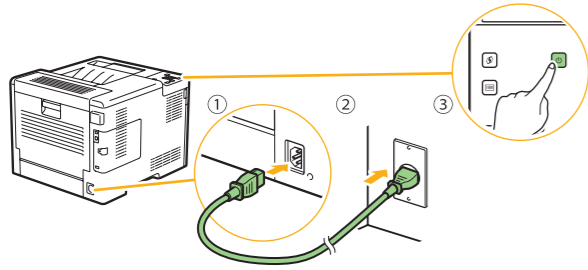
- When loading Legal-size paper, extend the front part of the tray. For more information, see User Guide included on the "Software/Product Manual" disc.
- 放入Legal尺寸紙張時，延伸紙盤前部。有關詳情，請參閱“軟體/產品說明書”光碟隨附的操作說明書。
- Legal 크기 용지를 넣을 경우 트레이 앞 부분을 펼치고, 자세한 내용은 "소프트웨어/제품 설명서" 디스크에 포함된 사용 설명서를 참조하십시오.
- เมื่อจะบรรจุกระดาษขนาด Legal ให้ยืดส่วนหน้าของถาด สำหรับข้อมูลเพิ่มเติม โปรดดูคู่มือผู้ใช้ที่อยู่ในแผ่นดิสก์ "ซอฟต์แวร์/คู่มือผลิตภัณฑ์"
- Khi nạp giấy khổ Legal, hãy mở rộng phần phía trước của khay. Để biết thêm thông tin, hãy xem Hướng dẫn sử dụng có trong đĩa "Hướng dẫn sử dụng sản phẩm/phần mềm".
- Saat memasukkan kertas berukuran Legal, panjangkan bagian depan baki. Untuk informasi selengkapnya, lihat Panduan Pengguna yang disertakan di disk "Software/Product Manual".

6 Connect the necessary cables
連接必要的纜線
필요한 케이블을 연결합니다
เชื่อมต่อสายต่างๆ ที่จำเป็น
Kết nối các cáp cần thiết
Hubungkan kabel yang diperlukan



- For wireless connection, do not connect the Ethernet cable.
- 對於無線連線，請勿連接Ethernet纜線。
- 무선 연결의 경우 이더넷 케이블을 연결하지 마십시오.
- สำหรับการเชื่อมต่อแบบไร้สาย ห้ามเชื่อมต่อสายอีเทอร์เน็ต
- Đối với kết nối không dây, không kết nối cáp Ethernet.
- Untuk koneksi nirkabel, jangan hubungkan kabel Ethernet.

7 Turn on the printer 開啓印表機 프린터 전원을 켭니다 เปิดเครื่องพิมพ์ Bật máy in Nyalakan printer



- If [Found New Hardware Wizard] appears on your computer, click [Cancel].
- 如果電腦上出現[尋找新增硬體精靈]，請點選[取消]。
- 컴퓨터에 [새 하드웨어 검색 마법사]가 나타나면 [취소]를 클릭합니다.
- หาก [พบตัวช่วยการติดตั้งฮาร์ดแวร์อันใหม่] ปรากฏขึ้นบนคอมพิวเตอร์ ให้คลิก [ยกเลิก]
- Nếu [Found New Hardware Wizard] xuất hiện trên máy tính của bạn, bấm [Cancel].
- Jika [Wisaya Ditemukan Perangkat Keras Baru] muncul di komputer, klik [Batal].

- When turning on the printer for the first time, configure the display language, time zone, date and time settings according to your environment. For more information, see *User Guide* included on the "Software/Product Manual" disc.
- 第一次開啓印表機時，請根據所在環境進行顯示語言、時區、日期和時間設定。有關詳情，請參閱“軟體/產品說明書”光碟隨附的**操作說明書**。
- 프린터를 처음 켜다면 해당 환경에 따라 표시 언어, 시간대, 날짜 및 시간 설정을 구성합니다. 자세한 내용은 "소프트웨어/제품 설명서" 디스크에 포함된 **사용 설명서**를 참조하십시오.
- เมื่อเปิดเครื่องพิมพ์ในครั้งแรก ให้กำหนดภาษาที่จะแสดงบนหน้าจอ โซนเวลา วันที่และเวลาตามสภาพแวดล้อมของคุณ สำหรับข้อมูลเพิ่มเติม โปรดดูคู่มือผู้ใช้ที่อยู่ในแผ่นดิสก์ “ซอฟต์แวร์/คู่มือผลิตภัณฑ์”
- Khi bật máy in lần đầu tiên, hãy định cấu hình ngôn ngữ hiển thị, múi giờ, cài đặt ngày và giờ theo môi trường của bạn. Để biết thêm thông tin, hãy xem *Hướng dẫn sử dụng* có trong đĩa “Hướng dẫn sử dụng sản phẩm/phần mềm”.
- Saat menyalakan printer untuk pertama kali, konfigurasi pengaturan bahasa tampilan, zona waktu, tanggal dan waktu sesuai dengan lingkungan Anda. Untuk informasi selengkapnya, lihat *Panduan Pengguna* yang disertakan di disk “Software/Product Manual”.

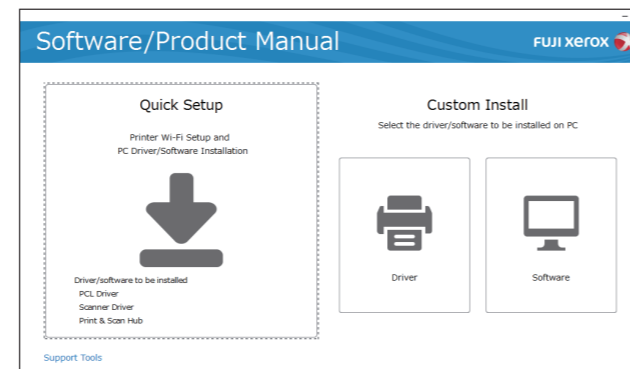
8 Install software 安裝軟體 소프트웨어를 설치합니다

ติดตั้งซอฟต์แวร์ Cài đặt phần mềm Menginstal perangkat lunak

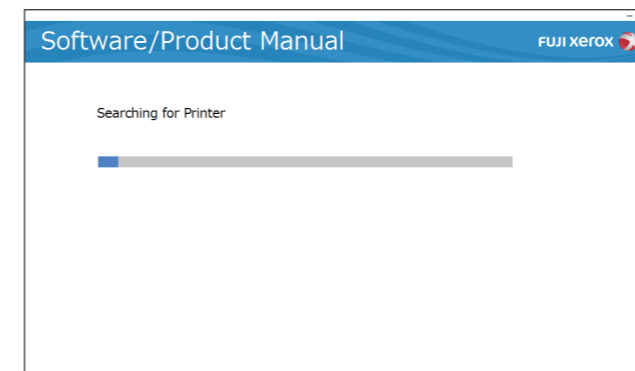
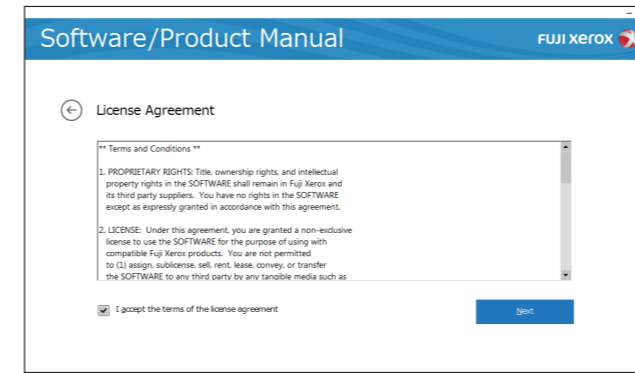
1. Insert the "Software/Product Manual" disc into your computer (Windows® only).
1. 將“軟體/產品說明書”光碟插入電腦（僅限於Windows®）。
1. 컴퓨터에 "소프트웨어/제품 설명서" 디스크를 넣습니다 (Windows®만 해당).
1. ใส่แผ่นดิสก์ “ซอฟต์แวร์/คู่มือผลิตภัณฑ์” ลงในคอมพิวเตอร์ (Windows® เท่านั้น)
1. Lấp đĩa “Hướng dẫn sử dụng sản phẩm/phần mềm” vào máy tính (chỉ dành cho máy tính chạy Windows®).
1. Masukkan disk “Software/Product Manual” ke dalam komputer Anda (Windows® saja).

- For information on how to install software for Mac OS X, see *User Guide* included on the "Software/Product Manual" disc.
- 有關如何為Mac OS X安裝軟體的詳情，請參閱“軟體/產品說明書”光碟隨附的**操作說明書**。
- Mac OS X용 소프트웨어를 설치하는 방법에 대한 자세한 내용은 "소프트웨어/제품 설명서" 디스크에 포함된 **사용 설명서**를 참조하십시오.
- สำหรับข้อมูลเกี่ยวกับวิธีการติดตั้งซอฟต์แวร์สำหรับ Mac OS X โปรดดูคู่มือผู้ใช้ที่อยู่ในแผ่นดิสก์ “ซอฟต์แวร์/คู่มือผลิตภัณฑ์”
- Để biết thông tin về cách cài đặt phần mềm cho Mac OS X, hãy xem *Hướng dẫn sử dụng* có trong đĩa “Hướng dẫn sử dụng sản phẩm/phần mềm”.
- Untuk informasi tentang cara menginstal perangkat lunak untuk Mac OS X, lihat *Panduan Pengguna* yang disertakan di disk “Software/Product Manual”.

2. Click [Quick Setup].
2. 點選[快速設定]。
2. [빠른 설치]을 클릭합니다.
2. คลิก [การติดตั้งด่วน]
2. Bấm vào [Thiết lập nhanh].
2. Klik [Quick Setup].



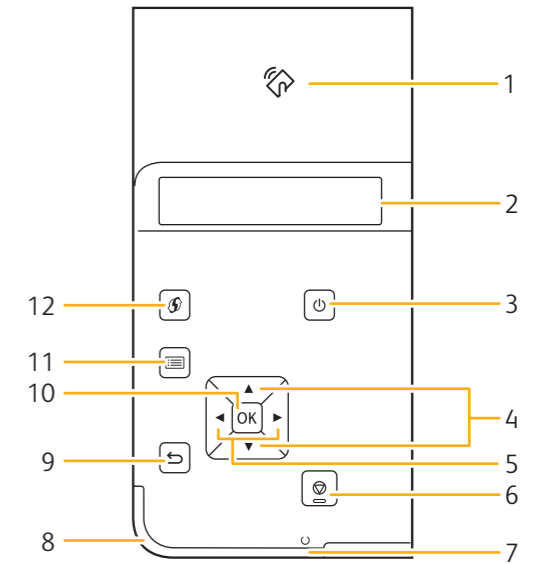
3. Select [I accept the terms of the license agreement], and then click [Next]. The printer installer starts searching for your printer.
3. 選擇[我接受授權合約中的條款]，然後點選[下一步]。印表機安裝程式開始搜尋您的印表機。
3. [사용권 계약에 동의합니다.]를 선택하고 [다음]을 클릭합니다. 해당 프린터에 대한 검색을 시작합니다.
3. เลือก [ฉันยอมรับเงื่อนไขของข้อตกลงการใช้งาน] จากนั้นคลิก [ถัดไป]
3. โปรแกรมติดตั้งเครื่องพิมพ์จะเริ่มค้นหาเครื่องพิมพ์ของคุณ
3. Chọn [Tôi chấp nhận với các điều khoản của thỏa thuận này] rồi bấm vào [Tiếp theo].
3. Trình cài đặt máy in sẽ bắt đầu tìm kiếm máy in của bạn.
3. Pilih [I accept the terms of the license agreement], lalu klik [Next]. Pemasang printer mulai mencari printer Anda.



4. After the printer is found, click [Install], and then follow the on-screen instructions to complete the setup.
4. 找到印表機後，點選[安裝]，然後遵照螢幕指示完成設定。
4. 프린터를 찾으면 [설치]를 클릭한 후 화면의 지시를 따라 설치를 완료합니다.
4. หลังจากพบเครื่องพิมพ์แล้ว ให้คลิก [ติดตั้ง] และปฏิบัติตามคำแนะนำบนหน้าจอเพื่อทำการตั้งค่าให้เสร็จสิ้น
4. Sau khi tìm thấy máy in, bấm vào [Cài đặt]. rồi làm theo hướng dẫn trên màn hình để hoàn tất quá trình thiết lập.
4. Setelah printer ditemukan, klik [Install], lalu ikuti petunjuk di layar untuk menyelesaikan pengaturan.

Setup is Complete! 設定完成!
설치가 완료되었습니다! การตั้งค่าเสร็จสมบูรณ์!
Quá trình thiết lập đã hoàn tất! Pengaturan Selesai!

Operator Panel 操作面板 조작부 แผงควบคุม Bảng vận hành Panel Operator



- | | | |
|-------------------------------------|--|--|
| 1 <NFC> | 2 LCD Panel
LCD面板 | 3 <Power> button
<電源>按鈕 |
| 12 <NFC> | 11 <NFC> | 10 <NFC> |
| 9 <NFC> | 8 <NFC> | 7 <NFC> |
| 4 ▲▼ buttons
▲▼按鈕 | 5 ◀▶ buttons
◀▶按鈕 | 6 <Cancel Job> button
<中止列印>按鈕 |
| ▲▼ Núť
▲▼ Núť | ◀▶ Núť
◀▶ Núť | ◻ <Print/Cancel> button
<프린트/중지> 버튼 |
| ▲ Tombol ▼ | ◀ Tombol ▶ | Núť ◻ <Cancel Job>
(Hủy lệnh) |
| 7 Ready LED
可以列ELED
프린트가능 LED | 8 Status LED
狀態LED
LED 상태 | 9 <Back> button
<返回>按鈕 |
| LED Ready
(แสดงความพร้อม) | โ้ว LED แสดงสถานะ:
Đèn LED trạng thái | ปุ่ม <Back> (ย้อนกลับ) |
| Ready (Sẵn sàng) LED | LED status | Núť <Back> (Quay lại) |
| LED Ready (Siap) | | Tombol <Back> (Kembali) |
| 10 [OK] button
[OK] 按鈕 | 11 <Menu> button
<功能>按鈕 | 12 <WPS> button
<WPS>按鈕 |
| ปุ่ม [OK] | ปุ่ม <Menu> (เมนู) | ปุ่ม <WPS> |
| [OK] núť | [OK] Núť <Menu>
(Trình đơn) | Núť <WPS> |
| Tombol [OK] | Tombol <Menu>
(Menu) | Tombol <WPS> |